

ICC **INDOFINE Chemical Company, Inc.**

121 Stryker Lane, Bldg. 30, Suite 1 • Hillsborough, NJ 08844 • U.S.A.

Phone: (908) 359-6778 • FAX: (908) 359-1179

website: www.indofinechemical.com

e-mail: chemical@indofinechemical.com

CERTIFICATE OF ANALYSIS

Catalog Number: 06-510

Product Name: **DIHYDROBERBERINE**
(Lambertine)

CAS Number: [483-15-8]

Lot Number: 2112622

Chemical Formula: C₂₀H₁₉NO₄

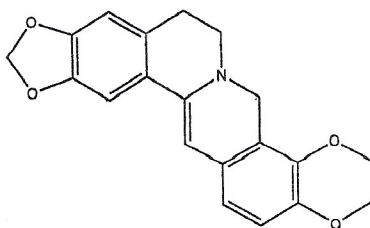
Molecular Weight: 337.37

Appearance: Yellow powder

Loss on Drying: 1.4%

Storage: Store at 2-8°C. Protect from light.

Purity(HPLC): 99.5%



Prepared by:
Ramesh Mandadi
Ramesh Mandadi
Director of Operations

Reviewed and Approved by:
Sujata Moton
Sujata Moton
VP

ICG INDOFINE Chemical Company, Inc.

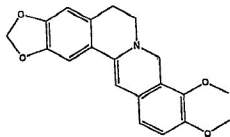
121 Stryker Lane, Bldg. 30, Suite 1 • Hillsborough, NJ 08844 • U.S.A.

Phone: (908) 359-6778 • FAX: (908) 359-1179

website: www.indofinechemical.com

e-mail: chemical@indofinechemical.com

HPLC ANALYSIS

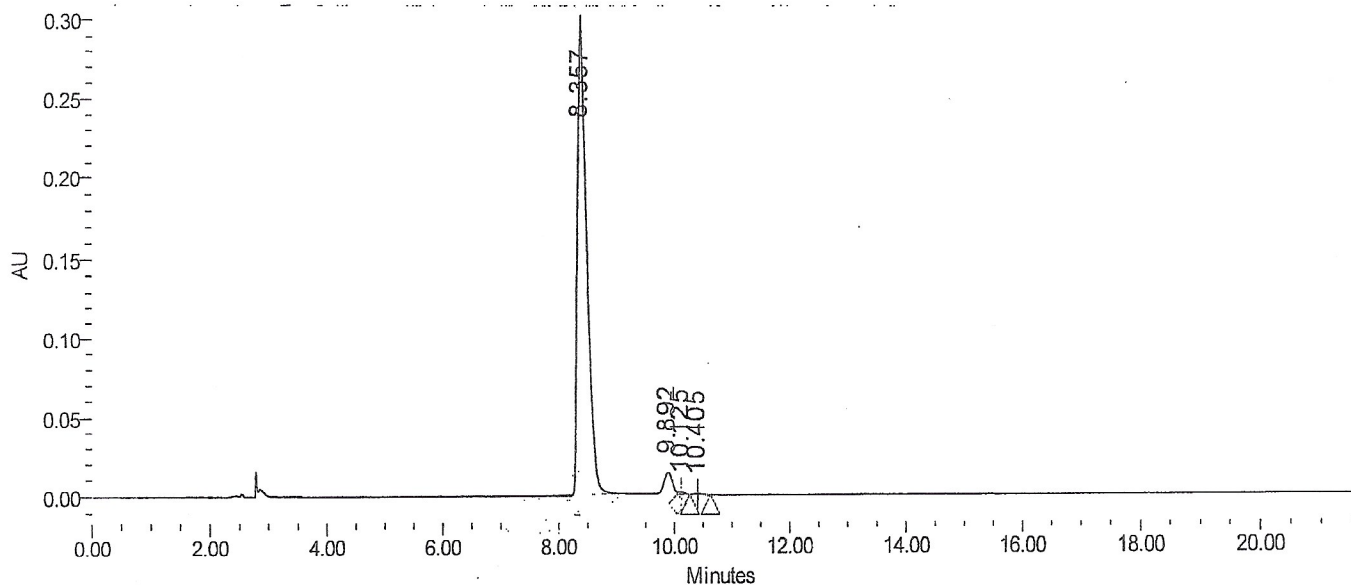


Catalog No.: 06-510
Product Name: Dihydroberberine
Lot No.: 2112622

SAMPLE INFORMATION

Sample Name:	Dihydroberberine	Acquired By:	01
Sample Type:	Unknown	Sample Set Name	
Vial:	27	Acq. Method Set:	Dihydroberberine
Injection #:	1	Processing Method	sample
Injection Volume:	10.00 ul	Channel Name:	PDA Ch1 265nm@4.8nm
Run Time:	30.0 Minutes	Proc. Chnl. Descr.:	PDA Ch1 265nm@4.8nm

Auto-Scaled Chromatogram



Peak Results

Name	RT	Area	% Area	Height (µV)	USP Plate Count	USP Resolution
1	8.357	3342077	95.55	294626	10748.55	
2	9.892	137127	3.92	13407	21419.23	5.15
3	10.125	12619	0.36	1594		
4	10.405	5827	0.17	640	28052.23	

Prepared by:
Ramesh Mandadi
Ramesh Mandadi
Director of Operations

Reviewed and Approved by:
Sujata Moton
Sujata Moton
VP